

Bipolar Disorder in the Perinatal Period

Marissa Beal, DO

Assistant Professor

Department Of Psychiatry

mbeal1@pennstatehealth.psu.edu



Disclosures

- No conflicts of interest



What is Bipolar Disorder?

- Bipolar disorder is characterised by recurrent episodes of depression and mania or hypomania
- Often misdiagnosed or over-diagnosed
- Age of onset 12 to 30 years, with a peak in reproductive years
- Chronic disease, relapsing and remitting
- Elevated suicide risk
- Increased risk of relapse with discontinuation of maintenance medication

Nierenberg et al., 2023



Mania

- Distinct period of time with below symptoms:
- Symptoms:
 - Elevated (3 or more below symptoms) or irritable (4 or more) mood
 - Increased self esteem or grandiosity
 - Decreased need for sleep
 - Rapid speech
 - Racing thoughts or flight of ideas
 - Distractible
 - Increased goal-directed activity (such as cleaning, cooking)
 - Increased dangerous behavior (spending lots of money, using substances, high risk sexual behaviors)



Mania: Screening

- Can utilize Mood Disorders Questionnaire (MDQ)
- Different from baseline
- Sustained over time
- Noticeable by others
- Decreased need for sleep – not feeling tired the next day
- In the absence of substances



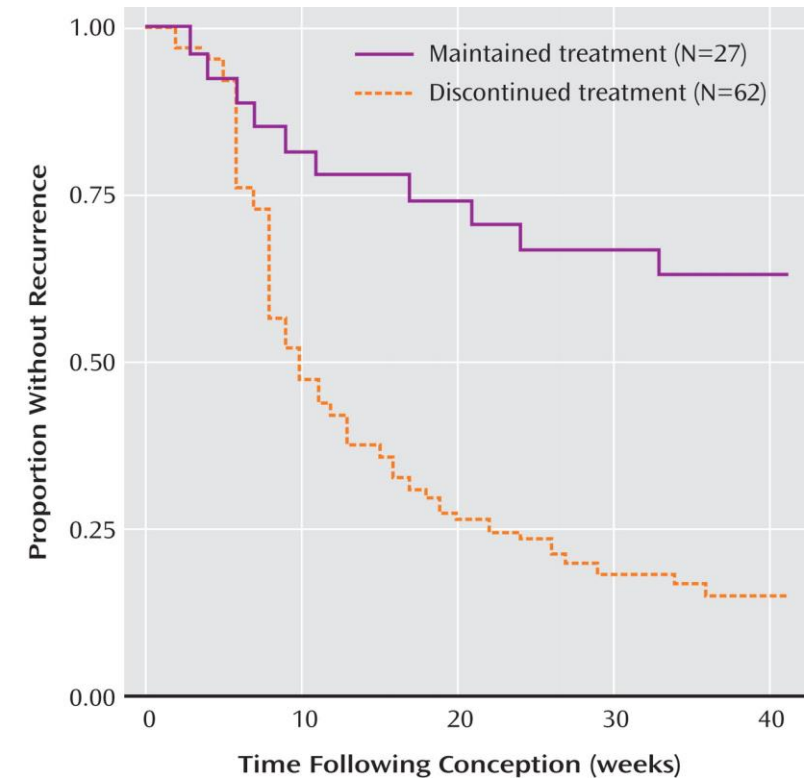
Role of OB and Primary Care Provider

- Screen for mania prior to initiation of SSRI/SNRI
- If bipolar disorder is suspected or history of bipolar disorder -> Refer to psychiatry
- Discuss risks of untreated bipolar disorder vs risks of medications



Risk of Relapse

- Very high risk of recurrence or relapse in pregnancy
- If treatment is stopped – 80% have recurrence
- Women who stop mood stabilizer spend 40% of pregnancy in mood episode vs 8.8% in women who continued treatment



Viguera et al., 2000; Viguera et al., 2007



Risks During Pregnancy

- Risks to maternal health
 - Poor prenatal care, increased substance use, risk of suicide, risk of postpartum psychosis
- Obstetric risks
 - C-section, IUGR, preeclampsia, placental abnormalities
- Risks to neonate
 - Low birth weight, adverse neurodevelopmental outcomes, small for gestational age, preterm birth

Hutner et al., 2021



General Principles

- Use lowest **effective** dose
- Minimize polypharmacy as able
- Often the best medication is the one that patient tolerates and is effective at maintaining stable mood
- May need to increase dose as pregnancy progresses due to physiologic changes in pregnancy

Hutner et al., 2021



Lithium During Pregnancy

- Increased risk of cardiac abnormalities – though absolute risk is lower than initially reported
 - Requires fetal echo at 20 weeks
- Other risks: preterm birth, higher birth weight, diabetes insipidus, hypothyroidism and neuromuscular complications
- Lithium is metabolized faster during pregnancy
 - Need to check lithium level monthly, then weekly in the last 4 weeks of pregnancy
 - Hold lithium during delivery
 - Restart pre-pregnancy dose after delivery
 - Re-check lithium level in the immediate postpartum and then 5 days postpartum

Patorno et al., 2016; Munk-Olsen et al., 2018; Fornaro et al., 2019



Lithium During Lactation

- Can consider breastfeeding on lithium with close collaboration with pediatrician
- Requires vigilance from parents to monitor for lithium toxicity in the infant
- RID is variable and is readily transmitted through the breastmilk, limited adverse events
 - Elevations of thyroid-stimulating hormone, blood urea nitrogen and creatinine have been reported and were transient
 - No adverse developmental effects though data is limited

Newmark et al., 2023



Mood Stabilizers During Pregnancy and Lactation

- Lamotrigine
 - Not associated with congenital malformations
 - Metabolized more rapidly due to increased estrogen levels effect on glucuronidation
 - Obtain pre-pregnancy level and monitor for mood changes
 - Excreted in breastmilk at high levels (RID 6-18%), though limited adverse events in infants
- Valproic acid
 - Associated with NTD, cardiac defects and neurodevelopmental adverse outcomes
 - Contraindicated in pregnancy
 - Discuss birth control with your reproductive aged patients on valproic acid!
 - RID < 5% so likely compatible with breastfeeding

Pariente et al., 2017; Nordmo et al., 2009; Jentink et al., 2009



Antipsychotics During Pregnancy

- No increased risk of neurodevelopmental disorders
- Likely no increased risk for congenital malformations
- 2011 FDA label based upon small studies warning of extrapyramidal symptoms (EPS) and withdrawal syndrome (tremor, tone abnormality, feeding problems, somnolence, irritability)
 - Other confounding factors- mothers may be using drugs, may have severe illness
 - Usually do not require interventions

Huybrechts et al 2016; Wang et al., 2021; Straub et al., 2022



Antipsychotics During Lactation

- Considered compatible with breastfeeding, most have RID < 10%
- Aripiprazole – partial agonist so may decrease prolactin and reduce supply
- Clozapine – contraindicated in breastfeeding due to risk of agranulocytosis



Bipolar Disorder During Pregnancy

- Plan for delivery
 - Collaborate with psychiatry and pediatrician
 - Discuss a plan for protecting sleep in the postpartum
 - Sleep deprivation can exacerbate mania/hypomania
 - Prescribe sleep - ensure support plan is in place to protect 5-6 hours of uninterrupted sleep
 - Discuss breastfeeding goals and how to protect sleep in this context
 - Identify support plan



Take Away Points

- Screen for and identify bipolar disorder
- Discuss risk of untreated illness vs risk of medications during pregnancy and breastfeeding in women with bipolar disorder
- Treatment of bipolar disorder during pregnancy and postpartum is extremely important
- Protect sleep as able in postpartum



Resources

- Massachusetts General Hospital (womensmentalhealth.org)
- Postpartum Support International
- Mother to baby (www.mothersandbabies.org)
- National Curriculum for Reproductive Psychiatry
- Lactmed
- Reprotox
- InfantRisk



References

- Hutner, L. A., Catapano, L. A., Nagle-Yang, S. M., Williams, K. E., & Osborne, L. M. (Eds.). (2021). *Textbook of Women's Reproductive Mental Health*. American Psychiatric Pub.
- Huybrechts, K. F., Hernández-Díaz, S., Patorno, E., Desai, R. J., Mogun, H., Dejene, S. Z., ... & Bateman, B. T. (2016). Antipsychotic use in pregnancy and the risk for congenital malformations. *JAMA psychiatry*, *73*(9), 938-946.
- Fornaro, M., Maritan, E., Ferranti, R., Zaninotto, L., Miola, A., Anastasia, A., ... & Solmi, M. (2020). Lithium exposure during pregnancy and the postpartum period: a systematic review and meta-analysis of safety and efficacy outcomes. *American Journal of Psychiatry*, *177*(1), 76-92.
- Jentink, J., Loane, M. A., Dolk, H., Barisic, I., Garne, E., Morris, J. K., & de Jong-van den Berg, L. T. (2010). Valproic acid monotherapy in pregnancy and major congenital malformations. *New England Journal of Medicine*, *362*(23), 2185-2193.
- Munk-Olsen, T., Liu, X., Viktorin, A., Brown, H. K., Di Florio, A., D'Onofrio, B. M., ... & Bergink, V. (2018). Maternal and infant outcomes associated with lithium use in pregnancy: an international collaborative meta-analysis of six cohort studies. *The Lancet Psychiatry*, *5*(8), 644-652
- Newmark, R. L., Bogen, D. L., Wisner, K. L., Isaac, M., Ciolino, J. D., & Clark, C. T. (2019). Risk-Benefit assessment of infant exposure to lithium through breast milk: a systematic review of the literature. *International Review of Psychiatry*, *31*(3), 295-304.
- Nierenberg AA, Agustini B, Köhler-Forsberg O, et al. Diagnosis and Treatment of Bipolar Disorder: A Review. *JAMA*. 2023;330(14):1370–1380
- Nordmo, E., Aronsen, L., Wasland, K., Småbrekke, L., & Vorren, S. (2009). Severe apnea in an infant exposed to lamotrigine in breast milk. *Annals of Pharmacotherapy*, *43*(11), 1893-1897.
- Pariente, G., Leibson, T., Shulman, T., Adams-Webber, T., Barzilay, E., & Nulman, I. (2017). Pregnancy outcomes following in utero exposure to lamotrigine: a systematic review and meta-analysis. *CNS drugs*, *31*, 439-450.
- Patorno, E., Huybrechts, K. F., Bateman, B. T., Cohen, J. M., Desai, R. J., Mogun, H., ... & Hernandez-Diaz, S. (2017). Lithium use in pregnancy and the risk of cardiac malformations. *New England Journal of Medicine*, *376*(23), 2245-2254.
- Straub, L., Hernandez-Diaz, S., Bateman, B. T., Wisner, K. L., Gray, K. J., Pennell, P. B., ... & Huybrechts, K. F. (2022). Association of antipsychotic drug exposure in pregnancy with risk of neurodevelopmental disorders: a national birth cohort study. *JAMA internal medicine*, *182*(5), 522-533.
- Viguera, A. C., Whitfield, T., Baldessarini, R. J., Newport, D. J., Stowe, Z., Reminick, A., ... & Cohen, L. S. (2007). Risk of recurrence in women with bipolar disorder during pregnancy: prospective study of mood stabilizer discontinuation. *American Journal of Psychiatry*, *164*(12), 1817-1824.
- Viguera, A. C., Newport, D. J., Ritchie, J., Stowe, Z., Whitfield, T., Mogielnicki, J., ... & Cohen, L. S. (2007). Lithium in breast milk and nursing infants: clinical implications. *American Journal of Psychiatry*, *164*(2), 342-345.
- Wang, Z., Brauer, R., Man, K. K., Alfageh, B., Mongkhon, P., & Wong, I. C. (2021). Prenatal exposure to antipsychotic agents and the risk of congenital malformations in children: A systematic review and meta-analysis. *British Journal of Clinical Pharmacology*, *87*(11), 4101-4123.

